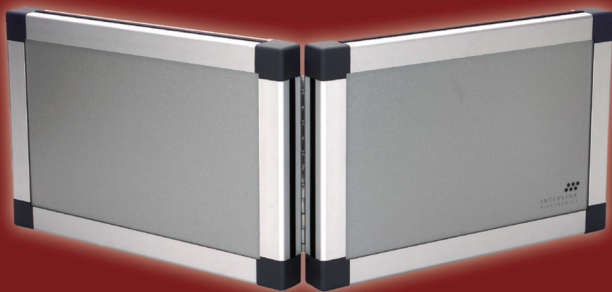


Go Speak!™



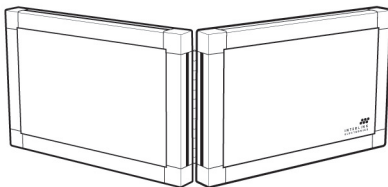
USER'S GUIDE



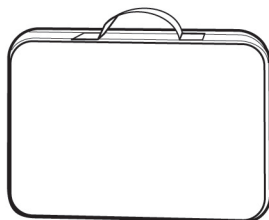
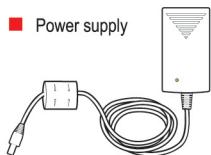
INTERLINK
ELECTRONICS

INCLUDED IN THE BOX

- GoSpeak!
Ultraportable
Amplification
System



- Power supply



- Carry Bag



- Power Cord



- Audio Cable (3.5mm)

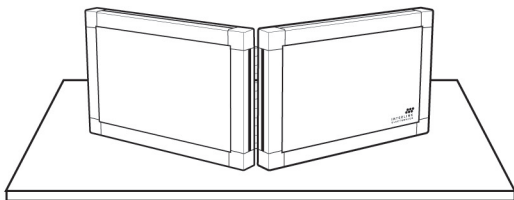


- User's Guide



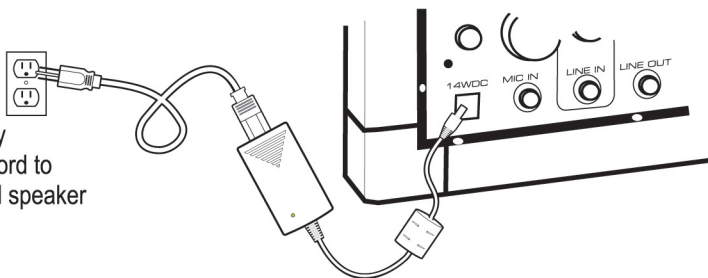
- Registration Card

FIRST USE



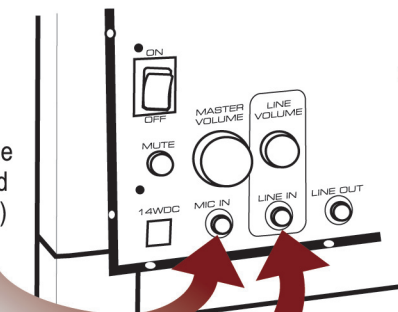
- Remove speaker from carry bag and place on a sturdy surface

- Connect power supply and power cord to wall jack and speaker



- Connect audio source to speaker

Microphone
(purchased
separately)



- Turn unit on and start speaking or entertaining

For computer,
CD player, etc.
(cable provided)

TROUBLESHOOTING

■ No sound comes from the unit

1. Check ON switch. Red LED should shine when on. Check power cord if no LED light is visible.
2. Check mute button. Press to release. Mute button is recessed when mute is activated.
3. Check master volume. Turn knob clockwise to increase.
4. Check line in volume. Turn knob clockwise to increase.
5. Check input connections for line in and/or mic in to ensure that they are fully inserted.
6. Check input device (microphone, computer, CD player, etc.) to determine if it is functional.

■ My microphone does not fit in the connector provided.

A variety of connector converters are available online and through audio specialty dealers. Select one that converts your microphone connector into 1/4" (3.5mm). (See registration card for free converter information.)

■ I'd like more bass sound.

GoSpeak! Works best when it is placed on a hard surface because it uses the surface to distribute and improve sound quality.

FREQUENTLY ASKED QUESTIONS

■ **Can I use both line in audio and a microphone simultaneously?**

Yes. Insert the connectors for each and use line volume to adjust sound mix.

■ **Where is the best place to place the speaker?**

Face the speaker toward the audience. Because GoSpeak! has omni directional sound, there is no “sweet spot.” The audience will experience rich quality sound no matter where in the room the speaker is placed.

■ **What type of microphone should I buy to use with GoSpeak?**

A dynamic, high-impedance microphone with a 1/8” (3.5mm) mini phone jack output is recommended.

■ **Can more than one GoSpeak! be daisy-chained?**

Yes



INTERLINK
ELECTRONICS

www.interlinkelec.com

546 Flynn Road • Camarillo, CA 93012
Phone: 805-484-8855 • Fax: 805-484-8989
Product Support: 888-696-3500